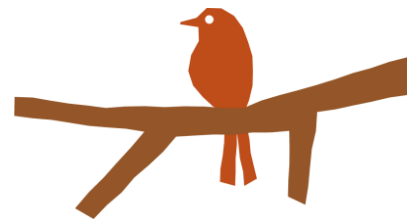




National
Education
Nature Park

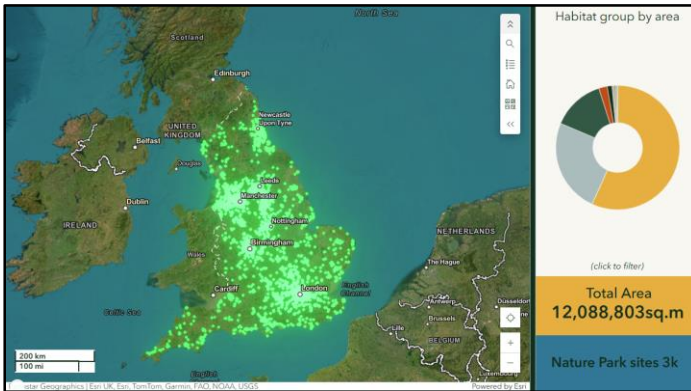


Take action for the future of young people and nature

What is the Nature Park?

The [National Education Nature Park](#) programme empowers children and young people to make a positive difference to both their own and nature's future. **Become part of a growing network of nurseries, schools and colleges working together to improve their sites for nature.**

How does it work?



By following [the 5-step process](#) using our free resources, you will take your learners on a journey from better understanding their outdoor space, making decisions on how to improve things, to making positive changes for nature.

By [mapping your site](#), you will not only gain insights into the opportunities for change where you are, but you will also be participating in real citizen science with the Natural History Museum.

Go on a journey to get to know your outdoor space and use creative decision-making to improve your grounds for both people and nature.

What support is available?

- A growing library of quality assured, cross-curricular curriculum-linked [resources](#), [local help](#) and [funding support](#)
- Keep up with news, events, webinars and case studies [here](#)
- Regional team for Yorkshire and the Humber:
yorkshirenaturepark@rhs.org.uk

Led by



Natural
History
Museum

With



RHS

Working with



esri UK
THE SCIENCE OF NATURE

Commissioned by



Department
for Education

Partners



THE
ROYAL
SOCIETY

